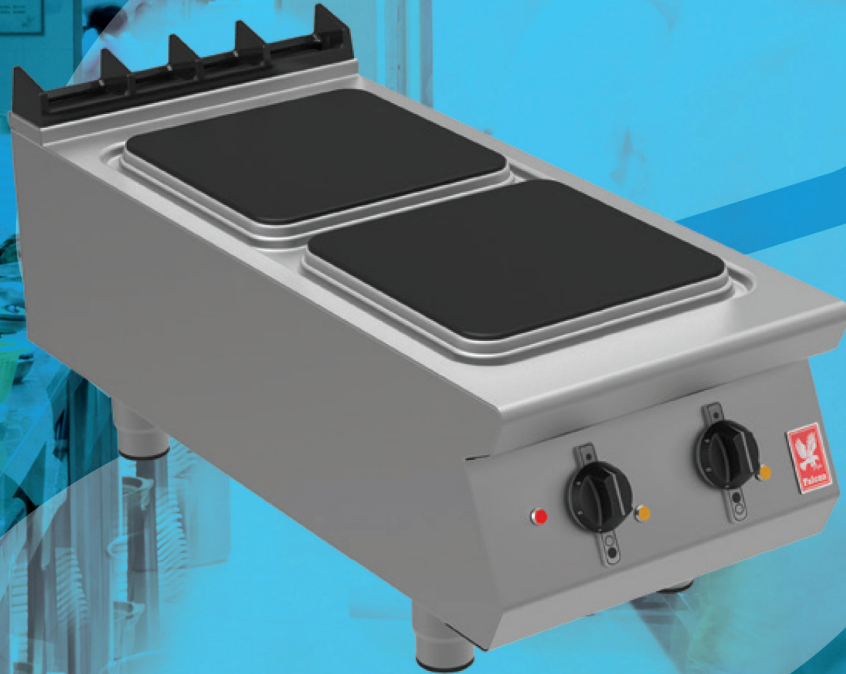


SERVICELINE

Catering & Refrigeration Equipment Sales  Est. 1989



**FALCON E9042 ELECTRIC
F900 TWO HOTPLATE BOILING TOP**

FALCON E9042 ELECTRIC F900 TWO HOTPLATE BOILING TOP

| SPECIFICATION DETAILS | E9042 |
|------------------------------------|------------------------------|
| Electrical rating (kW) | 8 |
| Electrical supply voltage | 400V 3N~ 50/60Hz |
| Required electrical supply (A) | 32 |
| Electrical current split (A) | L1: 17.3, L2: 17.3, L3: 17.3 |
| Element rating - hob (kW) | 2 x 4 |
| Size of hotplate (w x d - mm) | 300 x 300 |
| Weight (kg) | 40 |
| Weight on stand (kg) | 53 |
| Packed weight (kg) | 48 |
| Packed dimensions (w x d x h - mm) | 490 x 1000 x 780 |

KEY FEATURES

- 2 x high performance, 4kW cast iron hotplates - Quick heat up, reduced waiting time
- Each hotplate has 6 heat positions - Precise temperature control
- Pressed hob wells - Contains spillages, making it easier to clean
- IPX5 rated - Easy and problem-free cleaning
- Stainless steel panels with Scotch Brite finish - Looks great, ideal for front-of-house kitchens
- Dynamic Link System compatible - Integrated linking system allows quick and easy installation to create a seamless, continuous cookline

ACCESSORIES

- Fixed stand (ST40)
- Trivet
- Front hob rail
- Kick strip (for stand)
- Rear blanking plate (for stand)
- Side hob extension
- Factory fitted, adjustable castors

Similar Models

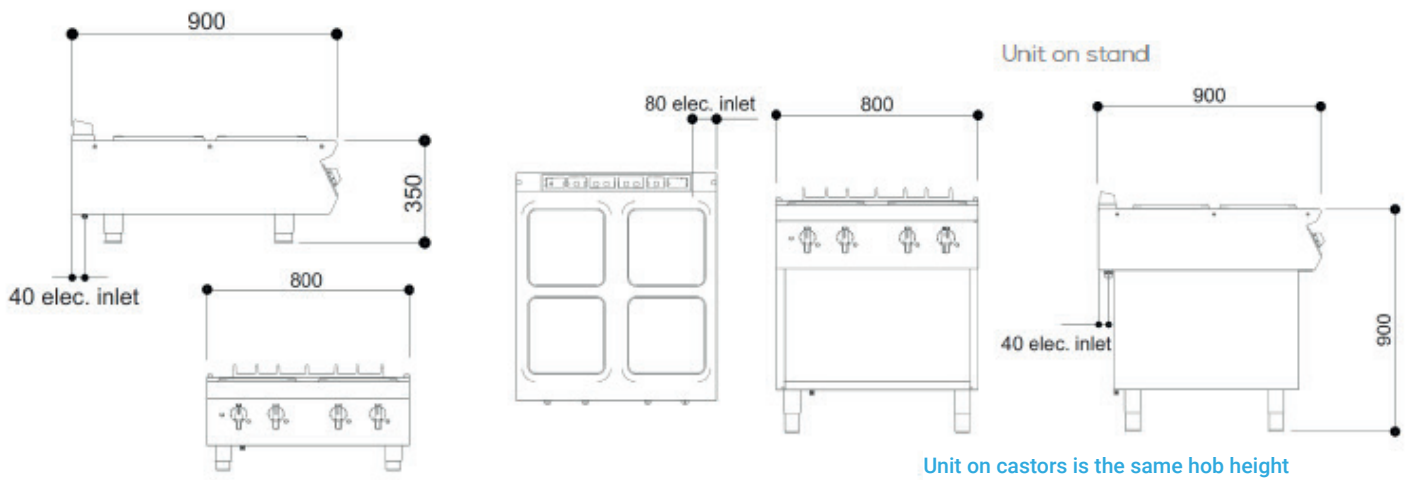
- E9084 four hotplate boiling top
- E3101 3 hotplate oven range
- E3101 4 hotplate oven range
- E3101P 6 hotplate oven range
- G9184 four burner gas oven range

INSTALLATION NOTE

Unit to be Falcon F900 Series two hotplate electric boiling top having 2 x 4kW electric cast iron hotplates. Unit to be supplied upon adjustable feet or upon optional base unit.

The hob will be constructed from 2mm 304 grade stainless steel. Hobs will be laser cut with right-angled edges to allow joining of units with no gaps between hobs. Exterior panels are Scotch Brite finish stainless steel. Control knobs to be marked showing temperature positions and to have a bezel behind each knob to prevent water ingress.

DIMENSIONS MEASUREMENTS IN MM



SERVICELINE

Catering & Refrigeration Equipment Sales  Est. 1989



01438 363 040

ServiceLine 1 Icen Ct, Icknield Way, Letchworth Garden City SG6 1TN