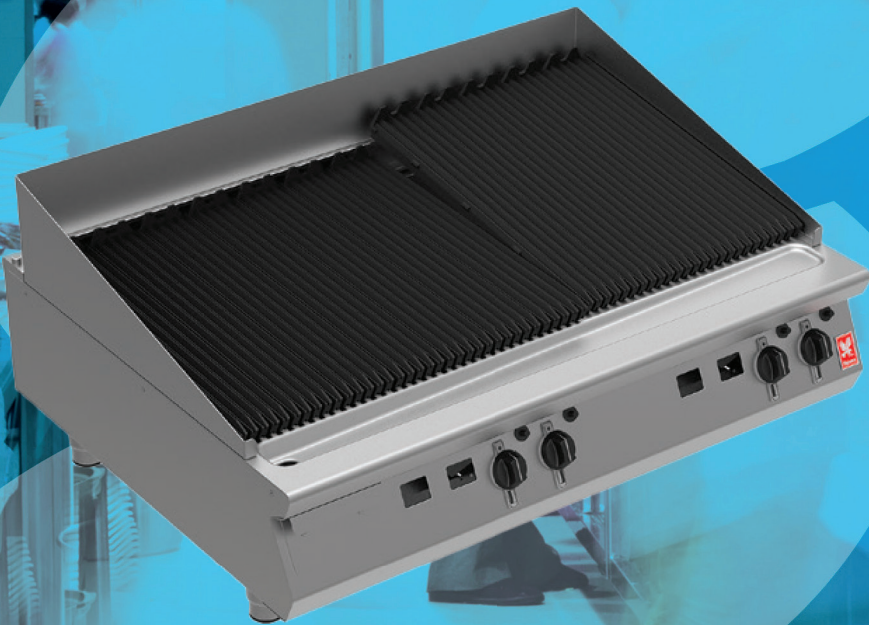


# SERVICELINE

Catering & Refrigeration Equipment Sales  Est. 1989



**FALCON G94120 GAS  
F900 CHARGRILL**

## FALCON G94120 GAS F900 CHARGRILL

SPECIFICATION DETAILS	NATURAL GAS	PROPANE GAS	BUTANE GAS
Total rating (kW - Nett)	33.6	36	36
Total rating (btu/hr - gross)	114,643	122,832	122,832
Inlet size	3/4" BSP	3/4" BSP	3/4" BSP
Flow rate - natural (m <sup>3</sup> /hr)	3.30m <sup>3</sup> /hr	2.61kg/h	2.57kg/h
Inlet pressure (mbar)	20	37	29
Operating pressure (mbar)	15	37	29
Burner rating * (kW)	8.4 x 4	9 x 4	9 x 4
Burner rating * (btu/hr)	28,660 x 4	30,708 x 4	30,708 x 4
Cooking area (w x d - mm)	1190 x 750	1190 x 750	1190 x 750
Number of branders	12	12	12
Number of radiants	8	8	8
Number of burners	4	4	4
Weight (kg)	215	215	215
Packed weight (kg)	236	236	236
Packed dimensions (w x d x h - mm)	1290 x 1000 x 780	1290 x 1000 x 780	1290 x 1000 x 780

### KEY FEATURES

- 3 x 8.4kW cast iron, independently-controlled burners - Quick heat up, reduced waiting time
- Reversible, angled, heavy duty cast iron brander bars - Delivers even heat across entire cooking surface
- Full width cooking area - Maximum output
- Removable stainless steel surround - Ensures adjacent equipment remains spatter free
- Pressed grease collection tray at front of unit - Catches and contains grease and fat
- Full width debris collection tray below unit - Catches all grease and debris
- Large capacity grease collection container - Easy to remove and empty during service
- Cast iron burners with variable control / turndown - Ensures chargrill is at the desired temperature
- Stainless steel panels with Scotch Brite finish - Looks great, ideal for front-of-house kitchens
- Dynamic Link System compatible - Integrated linking system allows quick and easy installation to create a seamless, continuous cookline

### ACCESSORIES

- Fixed stand (ST120)
- Griddle plate
- Front hob rail
- Kick strip (for stand)
- Rear blanking plate (for stand)
- Side hob extension
- Factory fitted, adjustable castors

### SIMILAR MODELS

- G9490 F900 900mm wide gas chargrill
- G31225 Dominator Plus 1200mm gas chargrill
- E9490 F900 900mm wide electric chargrill

### SHORT FORM SPECIFICATION

Unit to be Falcon F900 Series high performance gas chargrill having extended cooking zone with four cast iron 8.4kW burners. Unit to be supplied upon adjustable feet or installed upon open stand. Unit will be fitted with removable stainless steel splash-guard to the rear and sides. The unit will have cast iron burner radiants to protect burners and to offer improved heat transfer to cast iron brander bars. Burners to have variable heat settings with heat being distributed evenly.

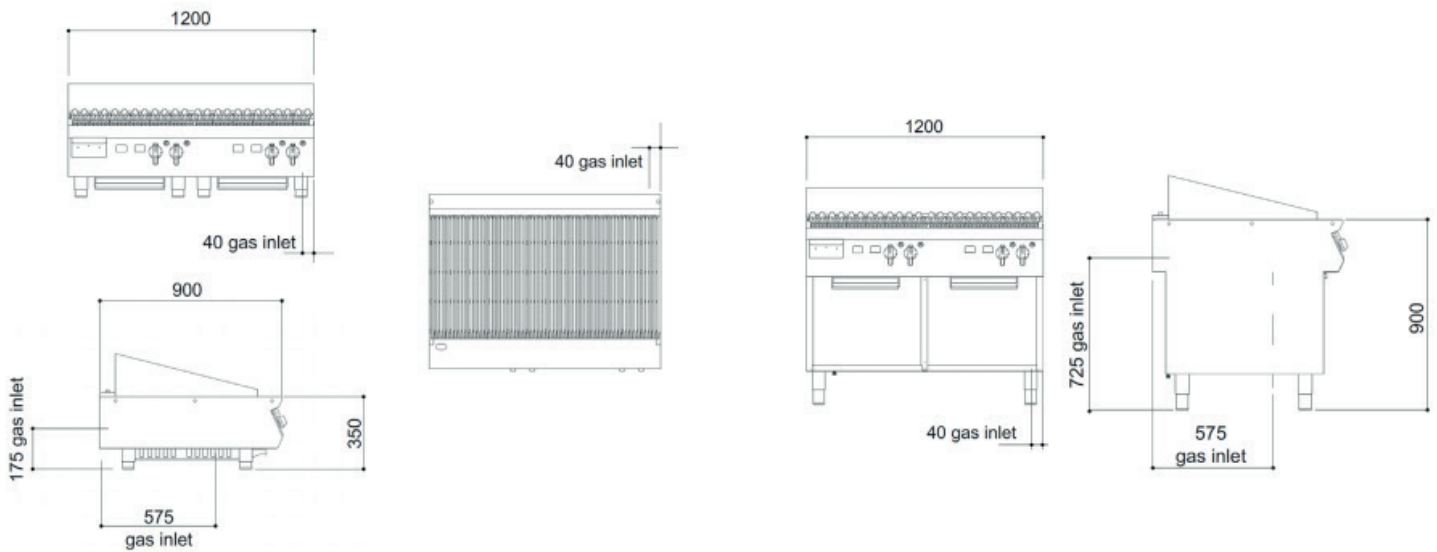
The cast iron brander bars will be a nominal 100mm wide each and cover the full cooking surface – allowing a food resting area at the front section. The bars will be reversible and designed to ensure that grease can flow from food into the full length pressed drip trough and then into the large capacity container.

The hob will be constructed from 2mm 304 grade stainless steel. Hobs will be laser cut with right-angled edges to allow joining of units with no gaps between hobs. Exterior panels are Scotch Brite finish stainless steel. Control knobs to be marked showing gas positions and to have a bezel behind each knob to prevent water ingress. Unit will be for use with natural, propane or butane gas and be supplied with conversion kit.

### INSTALLATION NOTE

Please consult local legislation with regard to installation of cooking equipment.

## DIMENSIONS MEASUREMENTS IN MM



The unit can be connected at the rear or from below

Unit on mobile stand is the same hob height



# SERVICELINE

Catering & Refrigeration Equipment Sales  Est. 1989



01438 363 040

ServiceLine 1 Icen Ct, Icknield Way, Letchworth Garden City SG6 1TN