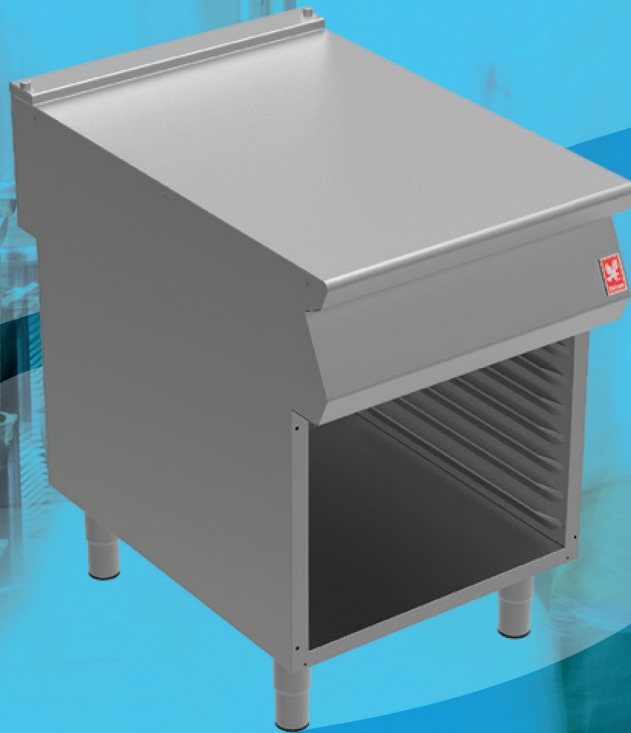


SERVICELINE

Catering & Refrigeration Equipment Sales  Est. 1989



FALCON CABINETS
F900 SERIES

FALCON F900 SERIES N940 OPEN CABINET

SPECIFICATION DETAILS	N940	N940D	N941
Weight / Packed weight (kg)	38 / 46	40 / 48	38 / 46
Packed dimensions (w x d x h - mm)	490 x 1000 x 1095	490 x 1000 x 1095	490 x 1000 x 1095

	N960	N960D	N961
Weight / Packed weight (kg)	43 / 51	53 / 61	43 / 51
Packed dimensions (w x d x h - mm)	700 x 1000 x 1095	700 x 1000 x 1095	700 x 1000 x 1095

KEY FEATURES

- Provides additional worktop and storage space - Completes the seamless cookline
- Choice of models to suit your needs
 - Open, with runners or with door options - 600 or 900mm widths
 - N941 holds 8 x 1/1 GN trays, N961 holds 8 x 2/1 GN trays
- Stainless steel panels with Scotch Brite finish - Looks great, ideal for front-of-house kitchens
- Dynamic Link System compatible - Integrated linking system allows quick and easy installation to create a seamless, continuous cookline

ACCESSORIES

- Front hob rail
- Kick strip
- Rear blanking plate
- Side hob extension
- Factory fitted, adjustable castors

SHORT FORM SPECIFICATION

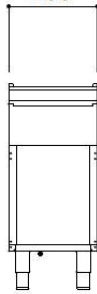
Unit to be open cabinet with optional runners or doors. Supplied upon adjustable feet or castors. The hob will be constructed from 2mm 304 grade stainless steel. Hobs will be laser cut with rightangled edges to allow joining of units with no gaps between hobs.

Exterior panels are Scotch Brite finish stainless steel.

DIMENSIONS MEASUREMENTS IN MM

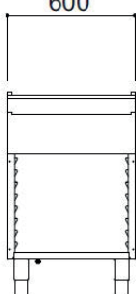
N940/N941/
N940D

400

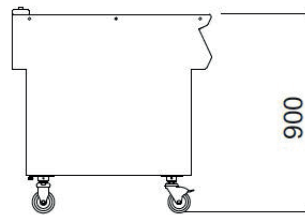
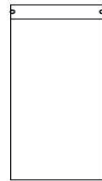
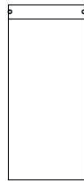
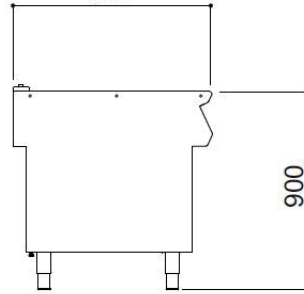


N960/N961/
N960D

600



900



SERVICELINE

Catering & Refrigeration Equipment Sales  Est. 1989



01438 363 040

ServiceLine 1 Icen Ct, Icknield Way, Letchworth Garden City SG6 1TN